

## Injury attendances to Stepping Hill Emergency Department

### October 2011 to September 2012

This report summarises recorded injury attendances to Stepping Hill Emergency Department (ED) between October 2011 and September 2012.

Between October 2011 and September 2012 there were 35,488 injury attendances to Stepping Hill ED. Males accounted for over half (53%) of all attendances. The month with the highest injury attendances was March (n=3,310) with December having the lowest attendances (n=2,564) (**Figure 1**). The majority (63%) of attendances did not have a specific injury group recorded. Of the specified injury groups, falls (12%) accounted for the highest proportion followed by sports injury (11%), road traffic collision (RTC) (6%) and assault (4%) (**Table 1**).

For all injuries, the highest proportion of attendances were for persons aged 5 to 19 (25%) and 20 to 34 (22%) years (**Figure 2**). Over half (55%) of fall attendees were aged 65 or over. Nearly half (46%) of assault attendees were aged 20 to 34 years. Almost four in ten (36%) of RTC attendees were aged 20 to 34 years (**Figure 3**).

The majority (87%) of attendees were white. Of the remaining attendees 11% were recorded as not stated (**Table 2**).

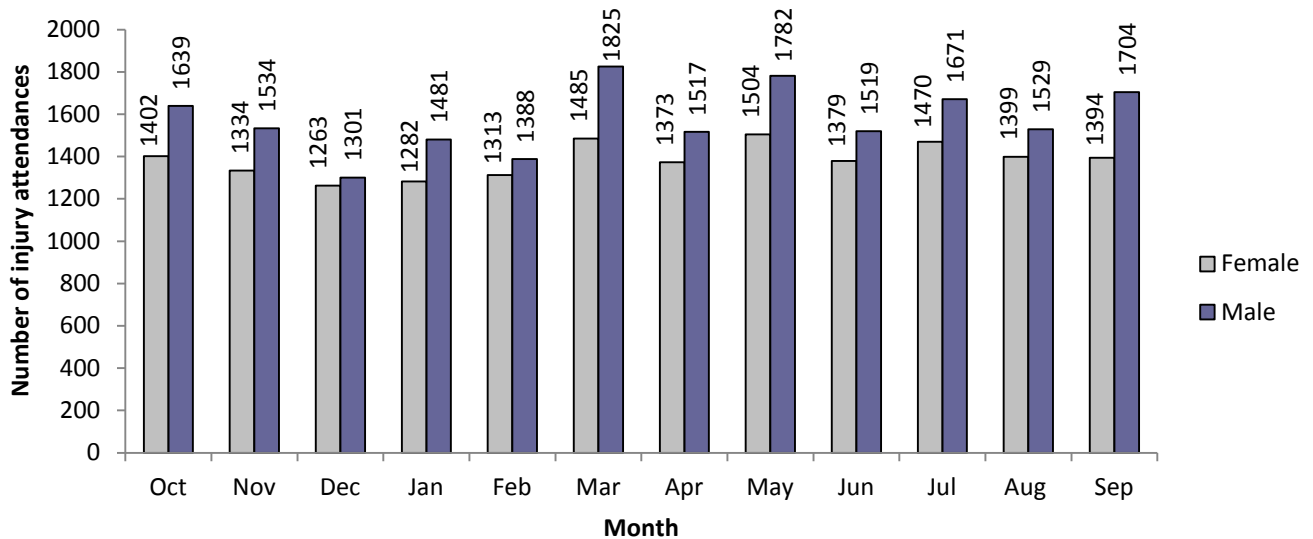
The disposal of a patient can give an indication of the severity of the injuries sustained. Six in ten (60%) of attendees were discharged, nearly three in ten (29%)

were referred, and 10% were admitted (**Table 3**). Four-fifths (80%) of RTC attendees were discharged whilst almost a third (32%) of fall attendees were admitted (**Table 4**).

**Table 5** shows the arrival methods of attendees at Stepping Hill ED. Over seven in ten (72%) arrived by car and 19% by ambulance.

**Table 6** presents data for assault attendees to Stepping Hill ED. The majority of attendees were male (69%) and 46% were aged 20 to 34 years. Four in ten (40%) of assault attendances arrived by ambulance.

**Figure 1: Stepping Hill ED: Total injury attendances by gender and month, October 2011 to September 2012**



**Table 1: Stepping Hill ED: Total injury attendances by injury group and month, October 2011 to September 2012**

Injury group	Oct	Nov	Dec	Jan	Feb	Mar	Apr	May	Jun	Jul	Aug	Sep	Total	%
Other injury	1785	1700	1636	1720	1734	2067	1881	2099	1885	2037	1882	1864	22290	63
Fall	408	384	405	390	315	391	311	339	281	330	299	383	4236	12
Sports injury	379	367	164	265	293	469	329	391	295	301	291	433	3977	11
RTC	194	205	181	190	171	168	175	191	198	173	198	192	2236	6
Assault	125	113	105	104	90	96	91	128	112	111	81	105	1261	4
Bites and stings	79	55	29	38	49	61	49	67	76	119	112	79	813	2
Burns and scalds	71	44	44	56	49	58	54	71	51	70	65	42	675	2
<b>Total</b>	<b>3041</b>	<b>2868</b>	<b>2564</b>	<b>2763</b>	<b>2701</b>	<b>3310</b>	<b>2890</b>	<b>3286</b>	<b>2898</b>	<b>3141</b>	<b>2928</b>	<b>3098</b>	<b>35488</b>	<b>100</b>

**Figure 2: Stepping Hill ED: Total injury attendances by age group and month, October 2011 to September 2012**

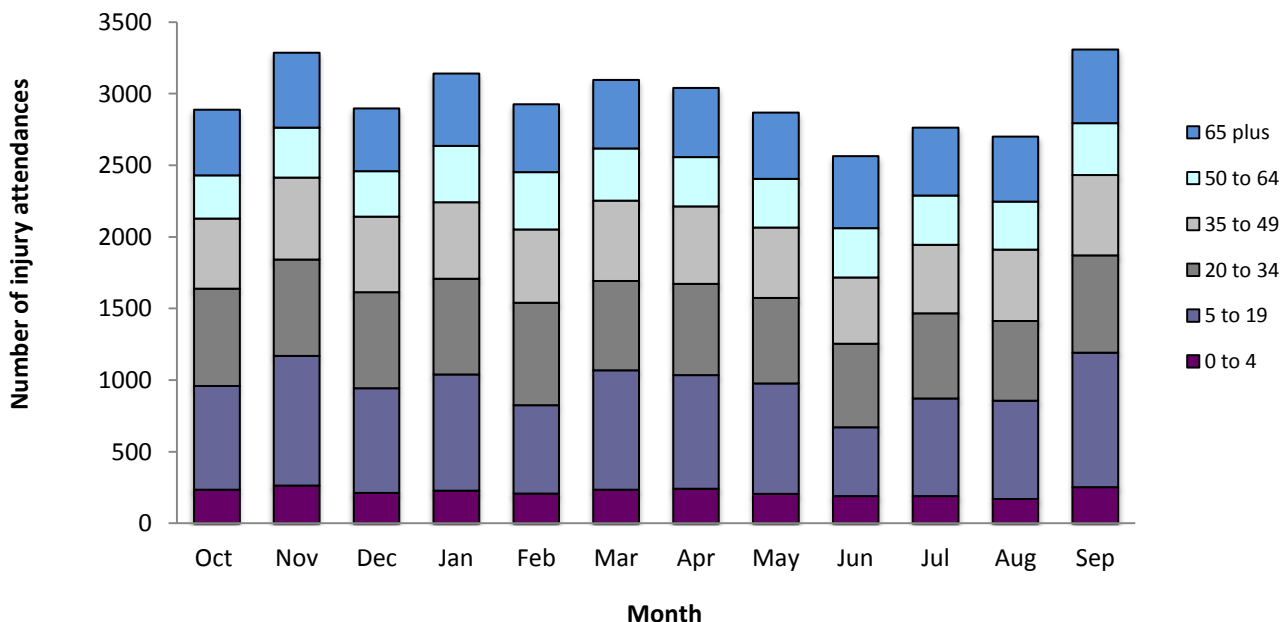


Figure 3: Stepping Hill ED: Total injury attendances by age group and injury group, October 2011 to September 2012

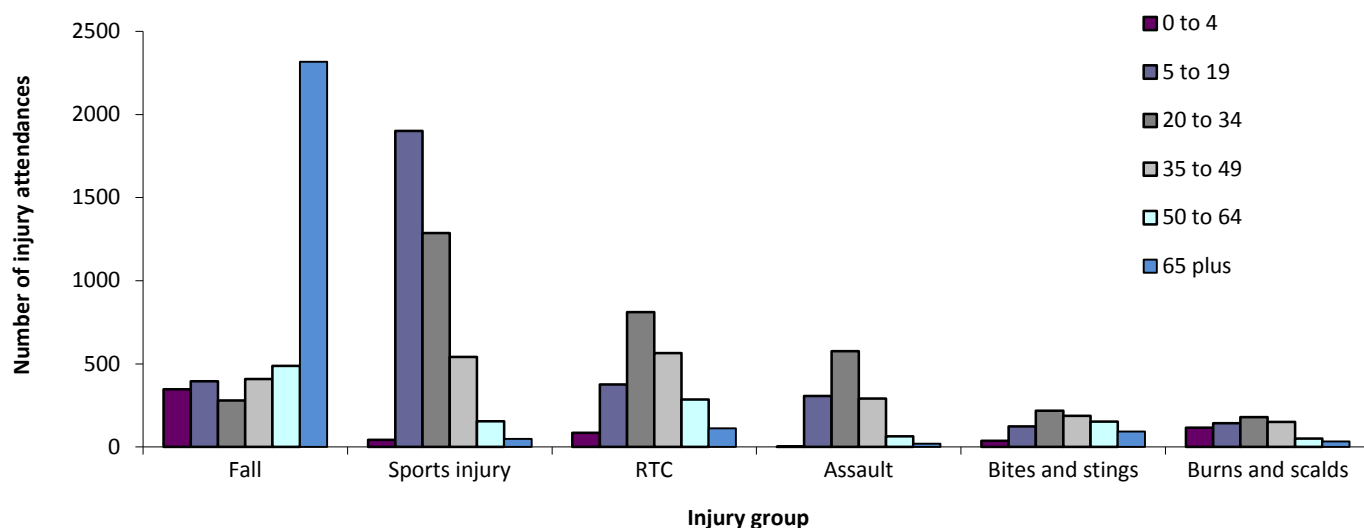


Table 2: Stepping Hill ED: Total injury attendances by ethnicity and month, October 2011 to September 2012<sup>1\*</sup>

Ethnicity	Oct	Nov	Dec	Jan	Feb	Mar	Apr	May	Jun	Jul	Aug	Sep	Total	%
White	2723	2528	2232	2424	2346	2921	2471	2798	2455	2697	2470	2647	30712	87
Not stated	249	290	279	282	300	326	358	421	378	378	407	385	4053	11
Pakistani	16	14	5	12	11	15	13	16	16	19	14	15	166	0
Mixed	16	9	13	15	12	17	10	15	12	21	9	10	159	0
Any other Asian background	9	7	8	10	<7	10	9	***	14	9	7	9	102	0
Any other ethnic group	6	6	6	6	7	5	6	11	8	***	***	14	82	0
Black	13	***	7	5	6	7	8	8	6	***	6	8	79	0
Indian	8	6	9	5	8	5	6	7	***	<6	8	8	78	0
Chinese	***	***	***	***	***	***	<7	<6	***	6	***	***	37	0
Bangladeshi	***	***	***	***	***	***	***	***	***	***	***	***	20	0
<b>Total</b>	<b>3041</b>	<b>2868</b>	<b>2564</b>	<b>2763</b>	<b>2701</b>	<b>3310</b>	<b>2890</b>	<b>3286</b>	<b>2898</b>	<b>3141</b>	<b>2928</b>	<b>3098</b>	<b>35488</b>	<b>100</b>

\*Percentages may not add up to 100 due to rounding.

Table 3: Stepping Hill ED: Total injury attendances by method of disposal and month, October 2011 to September 2012

Disposal	Oct	Nov	Dec	Jan	Feb	Mar	Apr	May	Jun	Jul	Aug	Sep	Total	%
Discharged	1809	1733	1533	1609	1651	1970	1801	2058	1694	1906	1698	1909	21371	60
Referral/follow-up	892	837	730	806	750	1006	785	893	879	905	866	876	10225	29
Admitted	319	277	279	319	279	301	273	297	287	295	319	285	3530	10
Other	21	21	22	29	21	33	31	38	38	35	45	28	362	1
<b>Total</b>	<b>3041</b>	<b>2868</b>	<b>2564</b>	<b>2763</b>	<b>2701</b>	<b>3310</b>	<b>2890</b>	<b>3286</b>	<b>2898</b>	<b>3141</b>	<b>2928</b>	<b>3098</b>	<b>35488</b>	<b>100</b>

\*Percentages may not add up to 100 due to rounding.

Table 4: Stepping Hill ED: Total injury attendances by method of disposal and injury group, October 2011 to September 2012<sup>1\*</sup>

Disposal	Assault		Bites and stings		Burns and scalds		Fall		Other injury		RTC		Sports injury		Total	
	n	%	n	%	n	%	n	%	n	%	n	%	n	%	n	%
Discharged	703	56	565	73	237	37	1893	45	13712	63	1792	80	2469	62	21371	60
Referral/follow-up	434	34	211	27	377	59	865	20	6654	30	315	14	1369	34	10225	29
Admitted	109	9	32	4	56	9	1374	32	1726	8	116	5	117	3	3530	10
Other	15	1	5	1	5	1	104	2	198	1	13	1	22	1	362	1
<b>Total</b>	<b>1261</b>	<b>100</b>	<b>813</b>	<b>100</b>	<b>675</b>	<b>100</b>	<b>4236</b>	<b>100</b>	<b>22290</b>	<b>100</b>	<b>2236</b>	<b>100</b>	<b>3977</b>	<b>100</b>	<b>35488</b>	<b>100</b>

\*Percentages may not add to 100 due to rounding.

<sup>1</sup> Please note that all numbers less than five have been suppressed in line with patient confidentiality and if there is only one number <5 in a category then two numbers will be suppressed at the next level.

**Table 5: Stepping Hill ED: Total injury attendances by arrival mode and month, October 2011 to September 2012**

Arrival mode	Oct	Nov	Dec	Jan	Feb	Mar	Apr	May	Jun	Jul	Aug	Sep	Total	%
Car	2189	2097	1751	1923	1926	2410	2156	2406	2166	2280	2083	2300	25687	72
Ambulance	593	542	566	571	552	598	516	601	515	597	563	584	6798	19
Bus	106	89	80	103	84	117	80	87	66	106	96	80	1094	3
Taxi	75	55	88	69	57	74	62	84	73	62	75	59	833	2
Walked	57	55	47	64	51	78	44	67	47	61	79	55	705	2
Police	10	14	14	16	12	7	17	22	20	17	10	9	168	0
Other	8	9	14	13	18	18	13	12	7	16	17	8	153	0
Bicycle	***	***	***	***	***	<6	***	<6	***	***	***	***	27	0
Public transport	***	***	***	***	***	***	***	***	***	***	***	***	23	0
<b>Total</b>	<b>3041</b>	<b>2868</b>	<b>2564</b>	<b>2763</b>	<b>2701</b>	<b>3310</b>	<b>2890</b>	<b>3286</b>	<b>2898</b>	<b>3141</b>	<b>2928</b>	<b>3098</b>	<b>35488</b>	<b>100</b>

**Table 6: Stepping Hill ED: Total assault attendances by gender, arrival mode and age group, October 2011 to September 2012**

Gender	Assault attendees (n=1,261)		All injury attendees (n=35,488)
	n	%	%
Male	871	69	53
Female	390	31	47
<b>Arrival mode</b>			
Ambulance	500	40	19
Other	761	60	81
<b>Age group</b>			
0 - 4	***	0	7
5 - 19	306	24	25
20 - 34	576	46	22
35 - 49	291	23	18
50 - 64	65	5	12
65 plus	<21	2	16

Published: December 2012

For further information please contact: Johnathan Rooney, Val Upton Centre for Public Health, Liverpool John Moores University, 2<sup>nd</sup> Floor, Henry Cotton Building, 15-21 Webster St., Liverpool, L3 2ET, Tel: 0151 231 4539 or Email: [j.rooney@ljmu.ac.uk](mailto:j.rooney@ljmu.ac.uk)